



an EnerSys Company

# COMBINER BRACKETS PRODUCT CATALOGUE



## **VERSION 1.0**

ISSUE DATE: 22 MARCH 2016

## SUMMARY:

THIS DOCUMENT LISTS THE VARIOUS COMBINER BRACKETS AVAILABLE FROM ICS INDUSTRIES.

# About Us

ICS Industries offers a range of unique products for the support, maintenance and upgrade of existing equipment infrastructure and ordinary stand-alone solutions. Access to all parts and equipment is available through our Shop Division.

## CONTACT DETAILS

Address: ICS Industries Pty Ltd  
309 Settlement Road  
Thomastown VIC 3074

Phone: (03) 9474 2008  
Fax: (03) 9465 5277

Email: [shop@icsindustries.com.au](mailto:shop@icsindustries.com.au)

Shop Operations Manager: Glenn Hartney

Shop Sales & Admin Support: Sue Ings and Hai To

## SHOP OPERATING HOURS (MON-FRI)

Office: 8:30am - 4:30pm AEDT  
Warehouse: 8:30am - 3:30pm AEDT

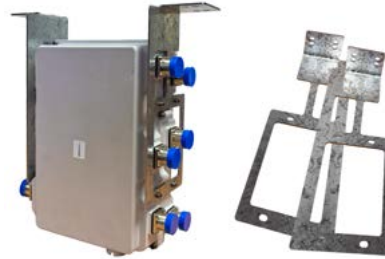
This page is intentionally left blank.



# Combiner Brackets

## HANGER COMBINER COM2 BRACKET FOR CABLE LADDER

- 2 x piece bracket supports 1 x combiner hung from cable ladder: COM2- E11F01P56, Commscope, DTPX 700/850/900 DC BYP



ICS PART NO:

LDX0006

## HANGER COMBINER COM1 (7-96/18-26) BRACKET FOR CABLE LADDER

- 1 x piece bracket supports 1 x combiner hung from cable ladder: COM1- E15V90P44- SINGLE, Commscope, Lowband 380-960 + Highband 1710-2700 combiner



ICS PART NO:

LDX0007

## HANGER COMBINER COM3 (18-21) BRACKET FOR CABLE LADDER

- 2 x Piece bracket supports 1 x combiner hung from cable ladder: COM3 – E15V90P43, Commscope, DQPX 1.8/2.1/2.3/2.6 DC BYP

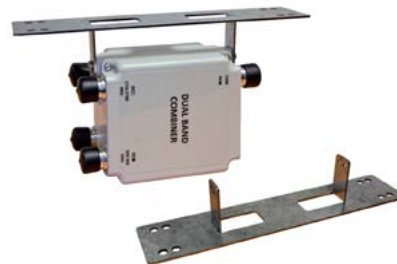


ICS PART NO:

LDX0008

## HANGER COMBINER COM1 BRACKET (V) TO SUIT KAELUS DBC0055F1V25-2

- 1 x piece bracket supports 1 x combiner hung from cable ladder
- The DBC0055F1V x Dual Band Combiner combines the 698-960 MHz and 1710-2700 MHz frequency bands

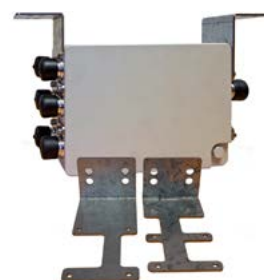


ICS PART NO:

LDX0010

## HANGER COMBINER TR11 BRACKET SET (V) TO SUIT KAELUS TBC0076F5V23-2

- 2 x Piece bracket supports 1 x combiner hung from cable ladder. The TBC0076 triplexer combines 900, 1800 and 2100 MHz signals onto a single output



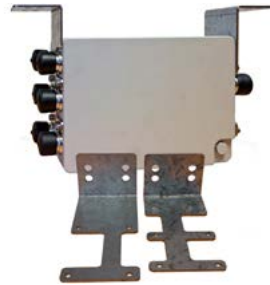
ICS PART NO:

LDX0011

# Combiner Brackets

## HANGER COMBINER COM4 BRACKET SUITS KAEIUS DBC002/F3V23-2

- 2 x Piece bracket to support 1 x dual band combiner hung from cable ladder
- The Kaelus DBC0021 combiner provides diplexing of 1800 and 2100MHz signals wherever both signals are required on a single output



ICS PART NO:

LDX0012

## HANGER COMBINER TO SUIT KAEIUS DBC0038F3V3-1 UMTS2100

- 2 x piece brackets to support combiners hung from cable ladder
- Suitable for Kaelus DBC0038F3V3-1 combiner unit



ICS PART NO:

LDX0015

## 900MM COMMSCOPE (SBC) (E15Z55P02) HANGER BRACKET

- 2 x piece bracket supports 1 x SBC hung from cable ladder
- Suitable for 900 Commscope SBC (E15Z55P02) LLC900MHz TYPE A

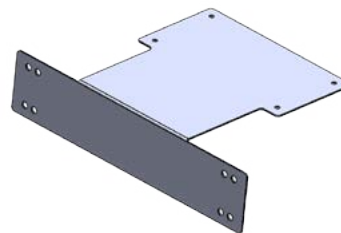


ICS PART NO:

LDX0016

## HANGER COMBINER BRACKET TO SUIT COMMSCOPE E11F23P1001

- 1 x piece bracket to support combiner hung from cable ladder

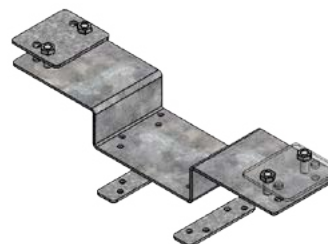


ICS PART NO:

LDX0070

## COMBINER BRACKET TO SUIT TONGYU TYT-C022-D001

- 5 x piece bracket to support combiner hung from cable ladder



ICS PART NO:

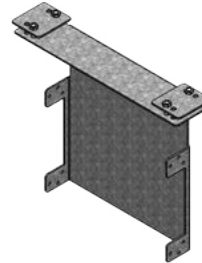
LDX0071

# Combiner Brackets

---

## COMBINER BRACKET TO SUIT TONGYU TYT-C002-D031

- 3 x piece bracket manufactured from galvanised steel sheet

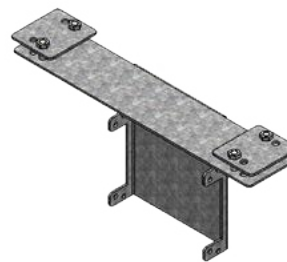


ICS PART NO:  
LDX0072

---

## COMBINER BRACKET TO SUIT TONGYU TYT-C003-D005

- 3 x piece bracket manufactured from galvanised steel sheet



ICS PART NO:  
LDX0073

---

## COMBINER BRACKET TO SUIT TONGYU TYT-C002-D015

- 2 x piece bracket manufactured from galvanised steel sheet



ICS PART NO:  
LDX0074

---

## COMBINER BRACKET TO SUIT TONGYU TYT-C124-D003

- 2 x piece bracket manufactured from galvanised steel sheet



ICS PART NO:  
LDX0075

---

## COMBINER BRACKET TO SUIT TONGYU TYT-C122-D017

- 2 x piece bracket manufactured from galvanised steel sheet



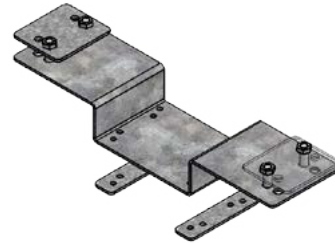
ICS PART NO:  
LDX0076

# Combiner Brackets

---

## COMBINER BRACKET TO SUIT TONGYU TYT-C122-D018

- 5 x piece bracket manufactured from galvanised steel sheet



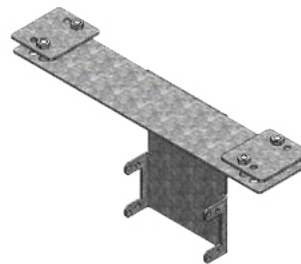
ICS PART NO:

LDX0077

---

## COMBINER BRACKET TO SUIT TONGYU TYT-C124-D007

- 3 x piece bracket manufactured from galvanised steel sheet



ICS PART NO:

LDX0078

---

## COMBINER BRACKET TO SUIT KAELUS DBC0068F1V3

- 1 x piece bracket manufactured from galvanised steel sheet



ICS PART NO:

LDX0079

---

# Combiner Brackets

## CABLE BAY CROSS BKT 579mm L 551mm MOUNTING TO SUIT RFX0154

- Requires 2 x RFK0002 (1 x cage nut, screw & washer) for mounting

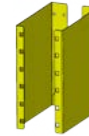


ICS PART NO:

LDX0021

## KAELUS 2100 SBC RACK KIT 255 X 270 X 2mm TO SUIT TBC0019F1V1

- Requires 2 x LDX0021
- Requires 4 x RFK0002 (1 x cage nut, screw & washer) for mounting

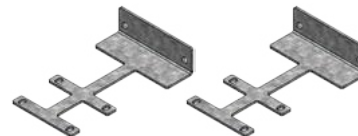


ICS PART NO:

LDX0022

## COMBINER BRACKET TO SUIT E11F05P49 TRIPLEX

- Requires 4 x RFK0002 (1 x cage nut, screw & washer) for mounting



ICS PART NO:

LDX0023

## COMBINER BRACKET TO SUIT E15V90P43 QUADPLEX

- Requires 4 x RFK0002 (1 x cage nut, screw & washer) for mounting

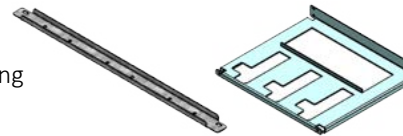


ICS PART NO:

LDX0024

## COMBINER SHELF KIT TO SUIT E11F01P56

- Requires 8 x RFK0002 (1 x cage nut, screw & washer) for mounting

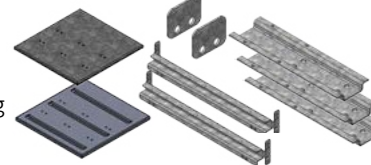


ICS PART NO:

LDX0025

## SLIDING SHELF KIT FOR RRU3256

- Includes M5x12 SEMS & M6x16 hex head screws for assembly
- Requires 16 x RFK0002 (1 x cage nut, screw & washer) for mounting

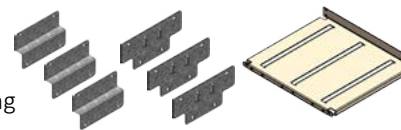


ICS PART NO:

LDX0026

## COMBINER SHELF KIT TO SUIT E15Z55P02

- Includes M6x10 SEMS screws for assembly
- Requires 6 x RFK0002 (1 x cage nut, screw & washer) for mounting



ICS PART NO:

LDX0027

## RACK RAIL CABLE BAY KIT ESU 1640mm L

- Includes thread cutting screws
- Required for Cable Management Bay

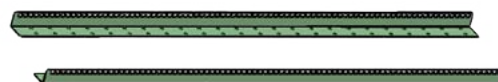


ICS PART NO:

RFX0154

## SHORT FRONT RAIL ESU 1230mm L

- Required if installing LDX0027



ICS PART NO:

RFX0155



# Combiner Brackets

## Expansion Bay

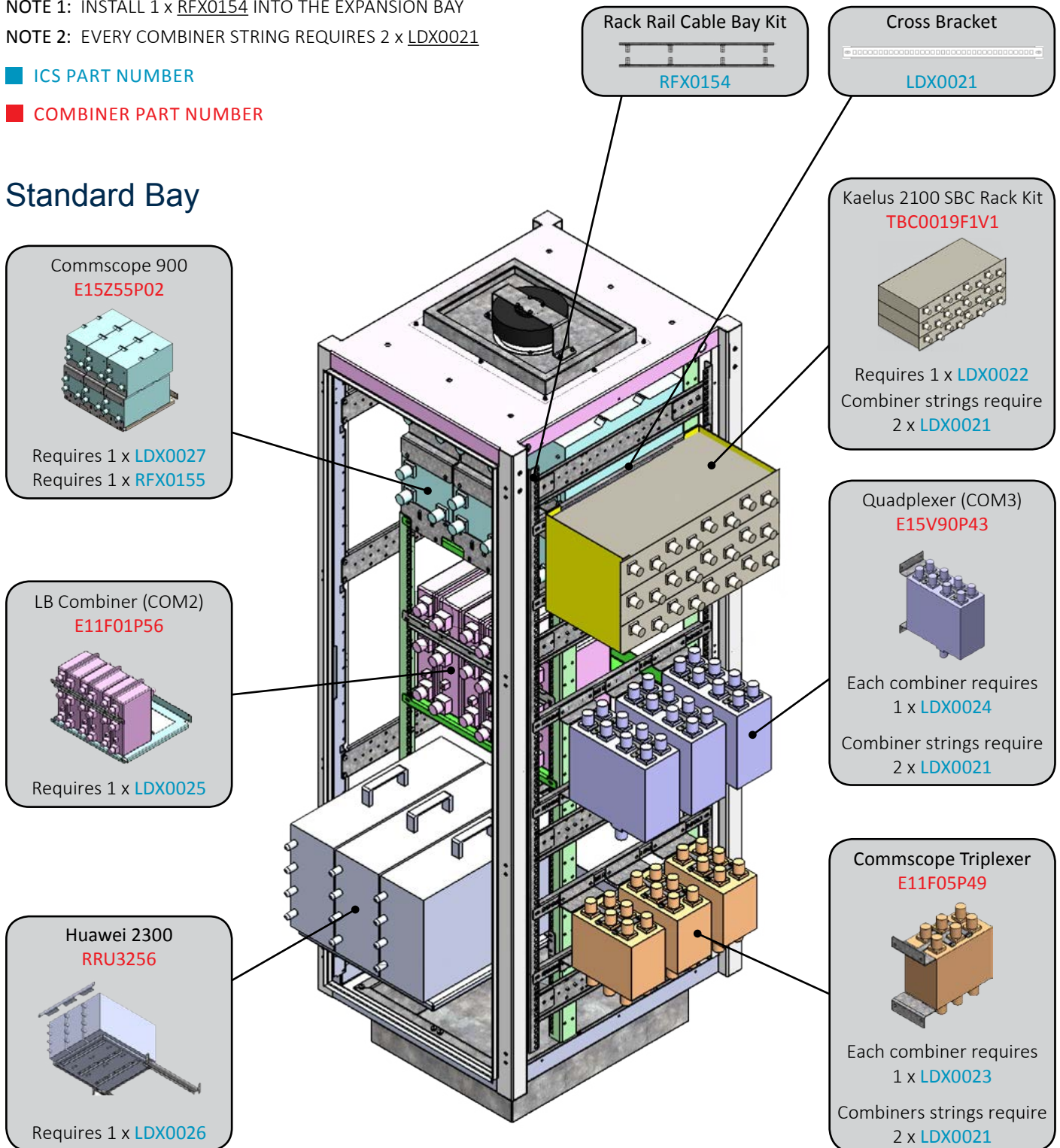
NOTE 1: INSTALL 1 x RFX0154 INTO THE EXPANSION BAY

NOTE 2: EVERY COMBINER STRING REQUIRES 2 x LDX0021

■ ICS PART NUMBER

■ COMBINER PART NUMBER

## Standard Bay





an EnerSys Company

#### HEAD OFFICE

309 Settlement Road, Thomastown VIC 3074

#### BRANCH OFFICES

46 Egerton Street, Silverwater NSW 2128

28 Duntroon Street, Brendale QLD 4500

3 Sandra Place, Welshpool WA 6106

57 Orsmond Street, Hindmarsh SA 5007

PH 1800 010 027

EMAIL [ics@icsindustries.com.au](mailto:ics@icsindustries.com.au)

WEB [www.icsindustries.com.au](http://www.icsindustries.com.au)

