



an EnerSys Company

Modular Cabinets

Outdoor Equipment Cabinets

Modular Cabinets

Our modular range of outdoor equipment cabinets have been designed with flexibility in mind, ensuring a scalable solution for future upgrades or expansion. Whether installed as a stand alone cabinet or configured to provide an interconnecting solution, the modular cabinet is very versatile.

Constructed from aluminium with a powder-coated finish for durability, combined with concealed security hinges and a 4-point locking mechanism to provide the ultimate protection in outdoor locations, it remains lightweight for easy placement on site.

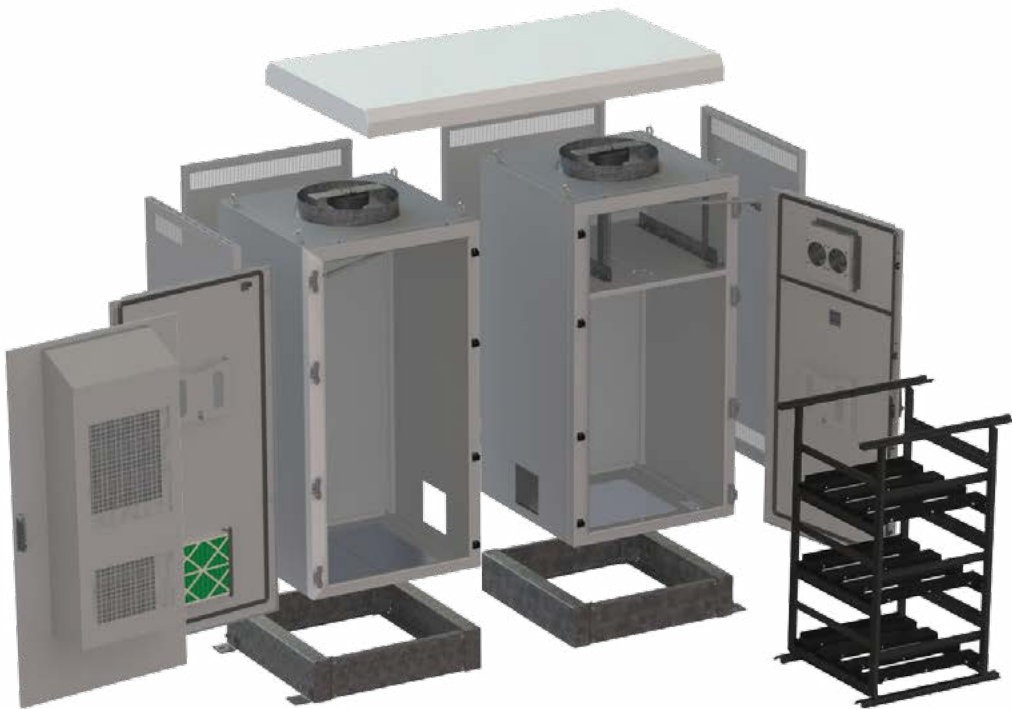
Key Features

- ✓ Multi-cabinet configurations
- ✓ 19" or 21" Rack Rails
- ✓ 200 mm hot dip galvanised steel plinth with access covers
- ✓ Front and rear doors
- ✓ Twin skin solar shielding
- ✓ Fresh-air fan cooling- open loop
- ✓ Concealed hinges & lifting hooks
- ✓ Air Filter
- ✓ 2 piece Gland Plate
- ✓ 4 piece Rack Rails



Square by design, the cabinet maximises available space through its flexible system configuration and provides multi compartment combinations (e.g side by side, back to back, back to side) to suit your specific needs.

These cabinets are available in a standard range for immediate purchase and come standard with a 48V DC centrifugal cooling fan mounted in the roof cavity. Designed to remove heat generated by the equipment inside the cabinet, it has a filtered air inlet mounted low inside the door and twin skin construction to provide solar shielding.



Common Variations

- Mild Steel or Stainless Steel construction
- 100mm hot dip galvanised steel plinth
- Battery / Equipment Shelving Systems
- Key lockable doors
- Floor Plate with brackets for external racks
- Single Skin or Single Door
- Combination, Air-conditioner and Fan cooling or HEX
- Air Conditioning
- 15mm Thermobreak™ insulation
- Industrial Power Rail
- PLC Environmental Control / Alarm systems
- Document Holder
- Heat Exchanger

Custom design and construction available, please contact ICS Industries for more information.

STANDARD RANGE - Available Now



20RU	34RU	42RU
Internal Dimensions	Internal Dimensions	Internal Dimensions
800 x 800 x 1000	800 x 800 x 1655	800 x 800 x 2000
Approx 100 kgs	Approx 150 kgs	Approx 200 kgs



an EnerSys Company

HEAD OFFICE

309 Settlement Road, Thomastown VIC 3074

BRANCH OFFICES

46 Egerton Street, Silverwater NSW 2128

28 Duntroon Street, Brendale QLD 4500

3 Sandra Place, Welshpool WA 6106

16 Adam Street, Hindmarsh SA 5007

PH 1800 010 027

EMAIL ics@icsindustries.com.au

WEB www.icsindustries.com.au

